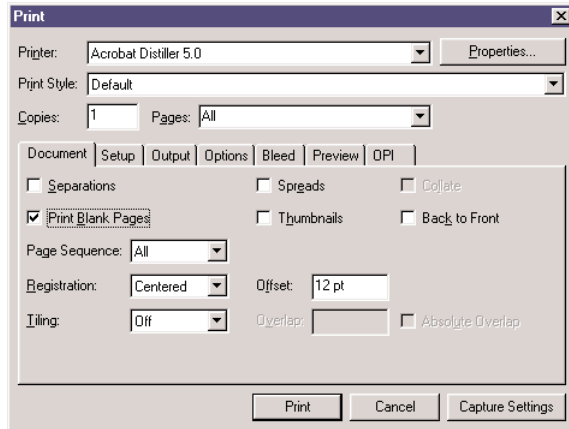
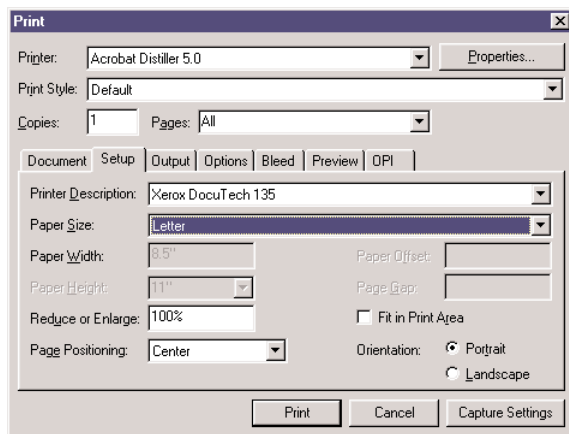


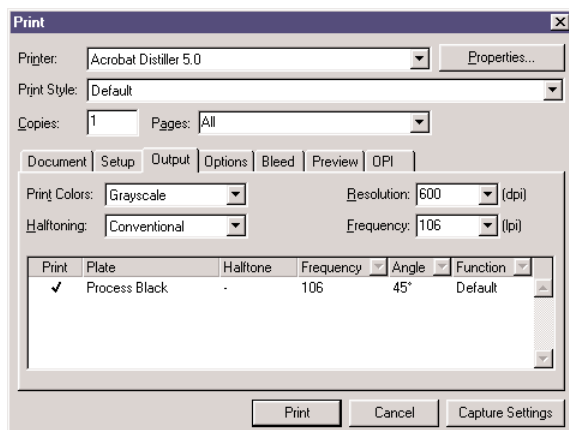
Creating a Postscript file (.ps, .prn) from Quark Express on a PC



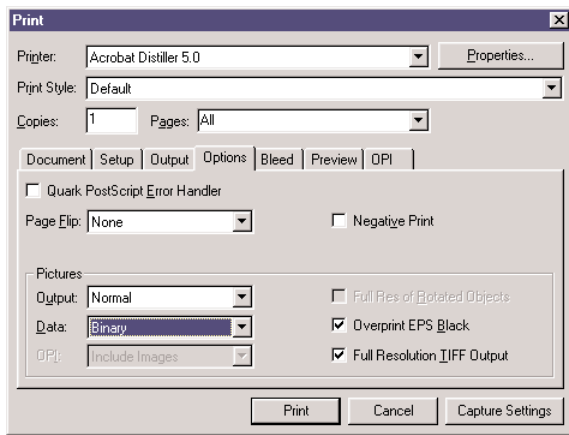
Set Registration marks to “Centered” and “12 pts”. Also be sure to turn on “Print Blank Pages”.



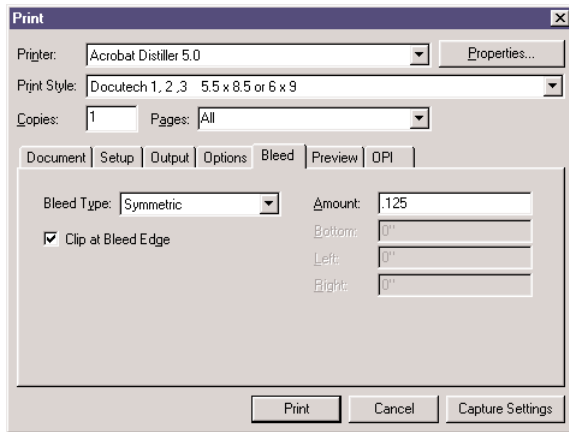
Select the Xerox Docutech 135 PPD file (available for download), and select the correct paper size. Also, set the Page Positioning to “Center” and “Portrait”.



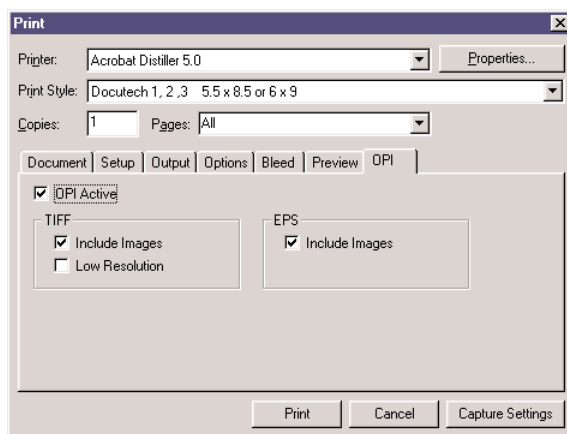
Print Colors should be set to “Grayscale” and Halftoning to “Conventional”. The Resolution should be 600 dpi, with a Frequency of 106 lpi.



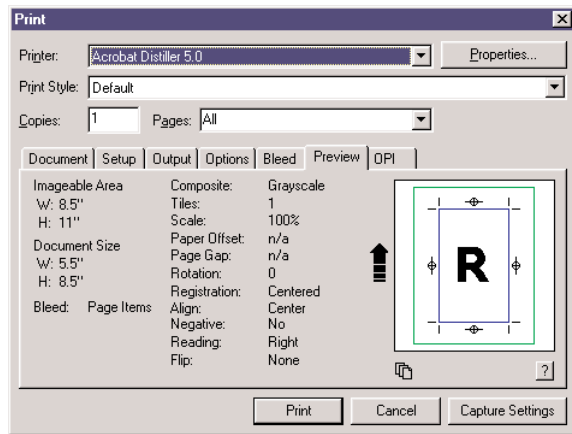
Output should be set to "Normal", and Data should be "Binary". Overprint EPS Black and Full Resolution TIFF Output should be checked "on".



Set Bleed to "Symmetric" and the amount to ".125". In Quark 4.1 and 3.3, these settings can be found under the Document tab, where you set the registration marks.



"OPI Active" should be checked on, as well as "Include Images" for both TIFF and EPS settings



The Preview is used to check over your settings to make sure everything appears ok.