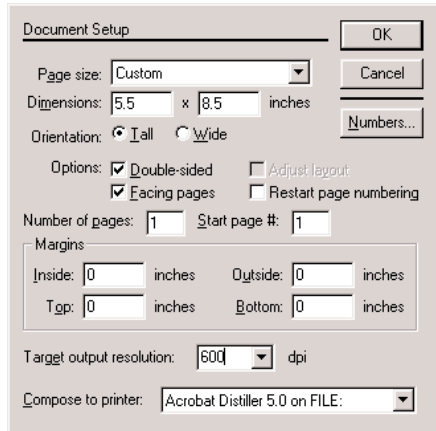
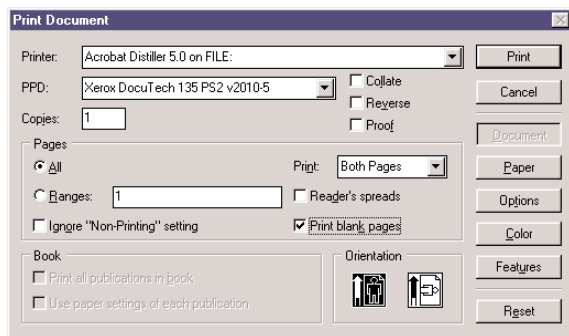


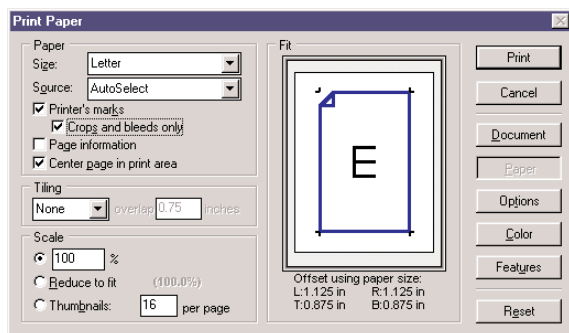
## Creating a Postscript file (.ps, .prn) from Pagemaker on a PC



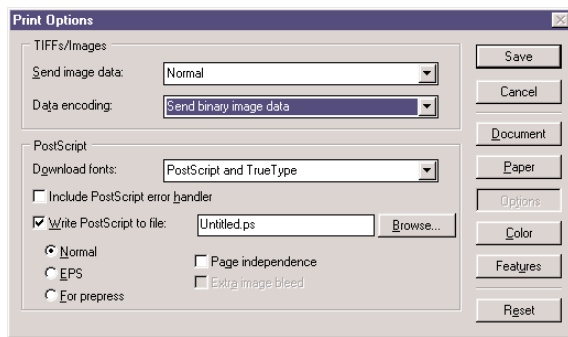
Set your page size and resolution to 600 dpi



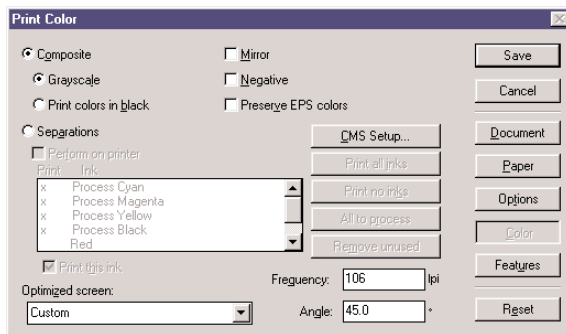
Select the Xerox Docutech 135 PPD file (available for download), check on "Print Blank Pages". Make sure "Reader's Spreads" are checked off.



Turn on "Printers Marks" with "Crops and Bleeds only". Also, "Center Page in print area", and make sure scaling is at 100%



Change Send Image Data from “Optimized” to “Normal”. Click on “Write to Postscript File”, and set the Data Encoding to “Binary Image Data”.



Set printing to Composite Grayscale. The Frequency should be “106 lpi”, and the Angle “45.0” degrees.